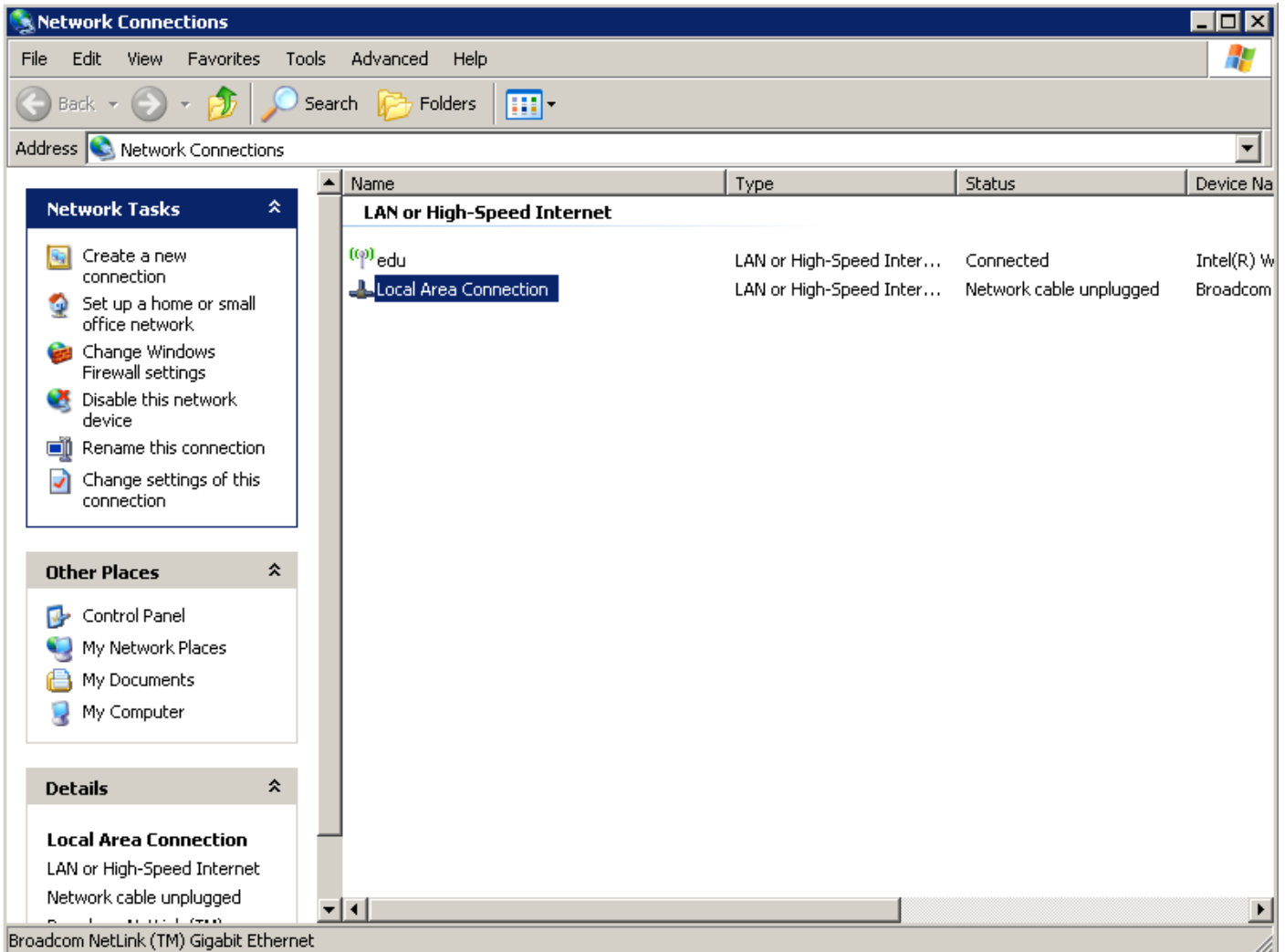


IEEE 802.1x authentication settings - Windows XP (x86/x64)

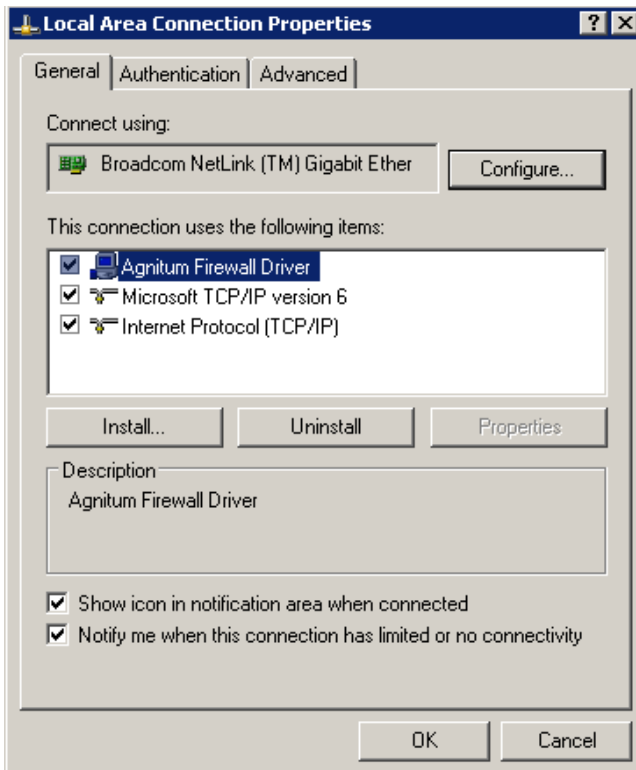
Press Start >> Settings >> Network Connections



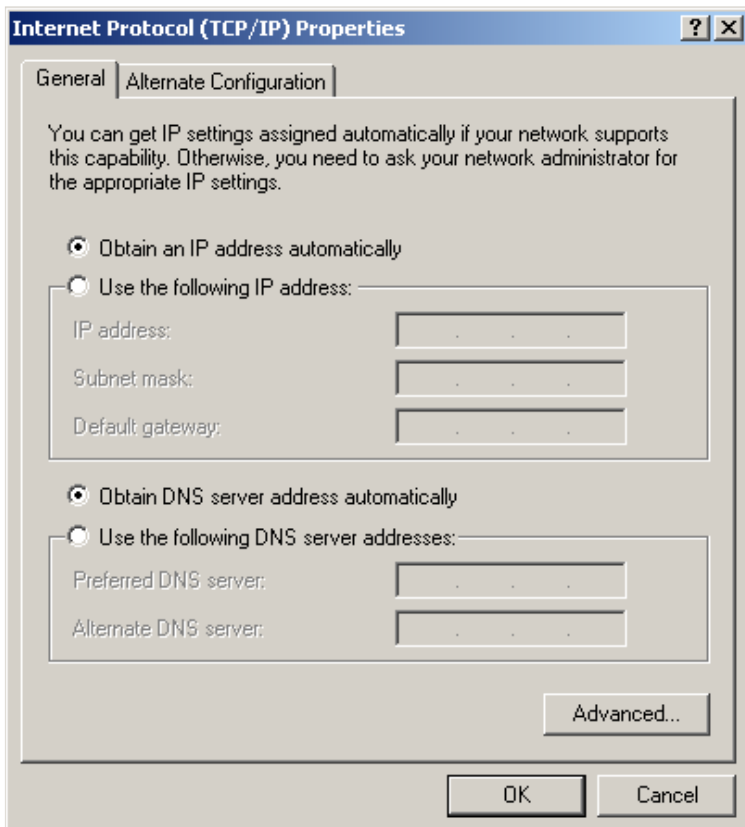
Double-click on **Local Area Connection**



Select Internet Protocol (TCP/IP) and click **Properties** to ensure TCP configuration is correct.

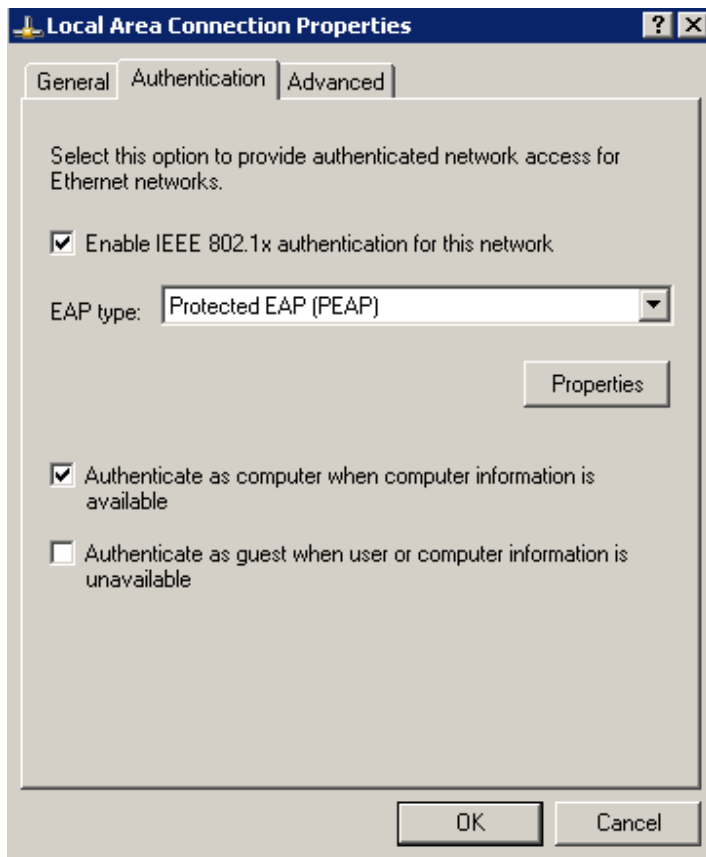


Make sure that Obtain an IP address automatically and obtain DNS server address automatically is selected.



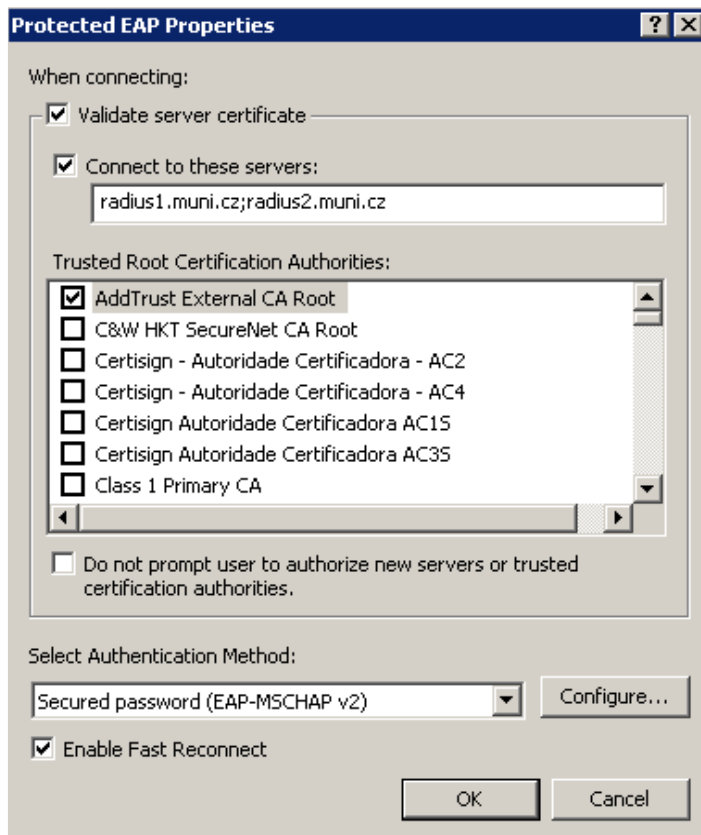
Click OK and continue on **Authentication** panel.

Select check box Enable IEEE 802.1x authentication for this network along with Authenticate as computer when computer information is available. Click on **Properties** to continue setting up this network.



In the **Protected EAP Properties** select **Validate server certificate** and **Connect to these servers** check boxes and type in: `radius1.muni.cz;radius2.muni.cz`.

Check *AddTrust External CA Root* on the **Trusted Root Certification Authorities** list.

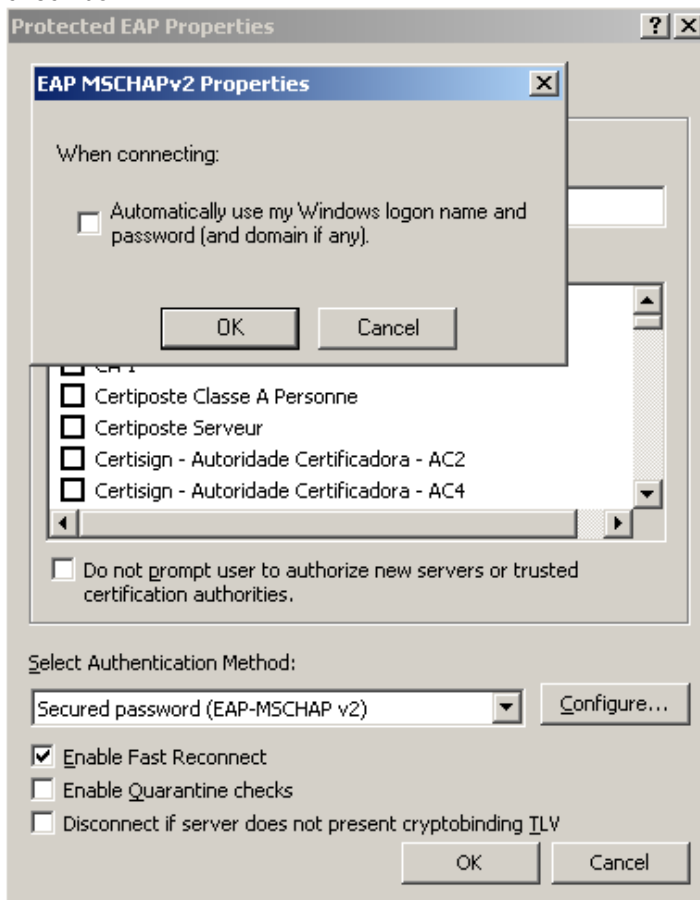


If AddTrust External CA Root is not visible on the Trusted Root Certification Authorities list, open Internet explorer and visit page <https://is.muni.cz>. AddTrust External CA Root should appear on the Trusted Root Certification Authorities list afterwards.

For systems without an automatic certificate update it is possible to download the certificate here: http://eduroam.muni.cz/lib/exe/fetch.php?hash=83b264&media=https%3A%2F%2Fprojekty.ics.muni.cz%2Fwiki%2Feduroam%2Fnavod-linux%2FCA_TERRENA.pem.

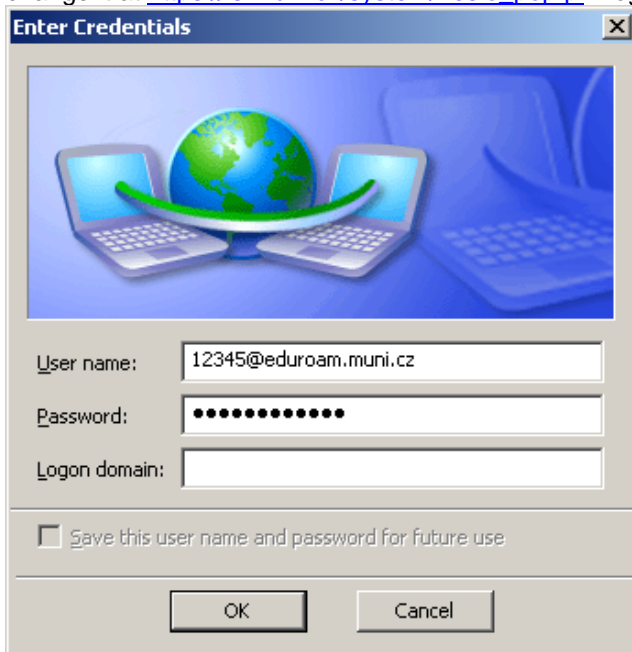
Use your numer (**ÚČO**) and secondary password to login.

Now click on Configure and un-check Automatically use my windows logon name and password check box.



Press OK until all configuration windows are closed. Operating system should immediately attempt to connect to the local network. Wait until logon credentials are required.

Click on the bubble box to enter your username and password. Your user name is **UČO@eduroam.muni.cz** and password is your **secondary password** for IS.muni.cz. If you do not remember your secondary password, you can change it at https://is.muni.cz/system/heslo_pop.pl. Logon domain should remain blank. Press OK.



System will now verify your credentials and connects you to the network.